



Item: Kore Oil Tincture
 Certificate ID#: H008-133-02
 Collected: 29 JUN 2022
 Strain: Original – 450 mg
 Batch/Lot ID Code: GVB 001

Received: 29 JUN 2022

Client Name: Summitt Labs
 Address: 6375 Harney Rd., Ste. 106, Tampa, FL 33610

License #:
 Report Date: 08 JUL 2022



ND Total Potential THC	1.843% Total Potential CBD
----------------------------------	--------------------------------------

1.867% Total Cannabinoids

Cannabinoid Profile

Analyte	LOQ (wt/wt) %	(wt/wt) %	mg/oz
Δ9-THC	0.019	ND	N/A
Δ8-THC	0.061	ND	N/A
Δ10-THC	0.001	ND	N/A
THCA-A	0.036	ND	N/A
CBD	0.001	1.843	503.228
CBDA	0.004	0.003	0.764
CBN	0.023	ND	N/A
CBG	0.024	ND	N/A
CBGA	0.002	ND	N/A

Cannabinoid Profile

Analyte	LOQ (wt/wt) %	(wt/wt) %	mg/oz
CBC	0.019	ND	N/A
CBCA	0.045	ND	N/A
THCV	0.036	ND	N/A
THCVA	0.032	ND	N/A
CBDV	0.024	0.021	5.787
CBDVA	0.027	ND	N/A
CBL	0.020	ND	N/A
CBLA	0.012	ND	N/A
HHC (9S+9R)	0.015	ND	N/A

Total Potential THC = (THCA * 0.877) + Δ9-THC
 Total Potential CBD = (CBDA * 0.877) + CBD
 (wt/wt) % = Percent (Weight of Analyte / Weight of Product)
 *Total Cannabinoids result reflects the absolute sum of all cannabinoids detected.

Cannabinoids analyzed per Atlas Labs FL ATP-5100 on Waters Aquity UPLC.

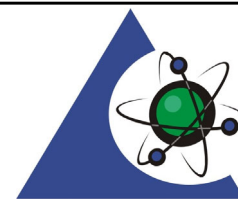
Terms & Definitions:

ND = Not Detected
 LOD = Limit of Detection
 LOQ = Limit of Quantitation

I certify that this sample has been tested by Atlas Labs FL, LLC. All results are reported on AS-IS basis.

Andrea Salcedo

Andrea Salcedo
 Laboratory Manager



PJLA
Testing

Certificate No.: L20-771

This product has been tested by Atlas Labs FL, LLC using validated testing methodologies under a QMS as required by ISO 17025:2017 and Florida state law. Sample collected per Atlas Labs' SOP-3006. This certificate may not be reproduced except in full, without the written approval of Atlas Labs FL, LLC. Additional information, if applicable, may be included on separate reports. The results relate only to the material or product analyzed. Test results are confidential unless explicitly waived otherwise. Action levels are State determined thresholds for human safety for consumption and/or inhalation. The results >99% are variable based on uncertainty of measurement for the analyte. The measurement uncertainty is available from the lab upon request.



Item: Kore Oil Tincture
 Certificate ID#: H008-133-03
 Collected: 29 JUN 2022
 Strain: Original – 750 mg
 Batch/Lot ID Code: GVB 001

Received: 29 JUN 2022

Client Name: Summitt Labs
 Address: 6375 Harney Rd., Ste. 106, Tampa, FL 33610

License #:
 Report Date: 08 JUL 2022



ND Total Potential THC	2.622% Total Potential CBD
----------------------------------	--------------------------------------

2.638% Total Cannabinoids

Cannabinoid Profile

Analyte	LOQ (wt/wt) %	(wt/wt) %	mg/g
Δ9-THC	0.019	ND	N/A
Δ8-THC	0.061	ND	N/A
Δ10-THC	0.001	ND	N/A
THCA-A	0.036	ND	N/A
CBD	0.001	2.622	777.647
CBDA	0.004	0.003	0.822
CBN	0.023	ND	N/A
CBG	0.024	ND	N/A
CBGA	0.002	ND	N/A

Cannabinoid Profile

Analyte	LOQ (wt/wt) %	(wt/wt) %	mg/g
CBC	0.019	ND	N/A
CBCA	0.045	ND	N/A
THCV	0.036	ND	N/A
THCVA	0.032	ND	N/A
CBDV	0.024	0.013	3.800
CBDVA	0.027	ND	N/A
CBL	0.020	ND	N/A
CBLA	0.012	ND	N/A
HHC (9S+9R)	0.015	ND	N/A

Total Potential THC = (THCA * 0.877) + Δ9-THC
 Total Potential CBD = (CBDA * 0.877) + CBD
 (wt/wt) % = Percent (Weight of Analyte / Weight of Product)
 *Total Cannabinoids result reflects the absolute sum of all cannabinoids detected.

Cannabinoids analyzed per Atlas Labs FL ATP-5100 on Waters Aquity UPLC.

Terms & Definitions:

ND = Not Detected
 LOD = Limit of Detection
 LOQ = Limit of Quantitation

I certify that this sample has been tested by Atlas Labs FL, LLC. All results are reported on AS-IS basis.

Andrea Salcedo

Andrea Salcedo
 Laboratory Manager



This product has been tested by Atlas Labs FL, LLC using validated testing methodologies under a QMS as required by ISO 17025:2017 and Florida state law. Sample collected per Atlas Labs' SOP-3006. This certificate may not be reproduced except in full, without the written approval of Atlas Labs FL, LLC. Additional information, if applicable, may be included on separate reports. The results relate only to the material or product analyzed. Test results are confidential unless explicitly waived otherwise. Action levels are State determined thresholds for human safety for consumption and/or inhalation. The results >99% are variable based on uncertainty of measurement for the analyte. The measurement uncertainty is available from the lab upon request.



Item: Kore Oil Tincture
 Certificate ID#: H008-133-04
 Collected: 29 JUN 2022
 Strain: Original – 1000 mg
 Batch/Lot ID Code: GVB 001

Received: 29 JUN 2022

Client Name: Summitt Labs
 Address: 6375 Harney Rd., Ste. 106, Tampa, FL 33610

License #:
 Report Date: 08 JUL 2022



ND Total Potential THC	3.181% Total Potential CBD
----------------------------------	--------------------------------------

3.208% Total Cannabinoids

Cannabinoid Profile

Analyte	LOQ (wt/wt) %	(wt/wt) %	mg/g
Δ9-THC	0.019	ND	N/A
Δ8-THC	0.061	ND	N/A
Δ10-THC	0.001	ND	N/A
THCA-A	0.036	ND	N/A
CBD	0.001	3.181	1087.751
CBDA	0.004	ND	N/A
CBN	0.023	ND	N/A
CBG	0.024	ND	N/A
CBGA	0.002	ND	N/A

Cannabinoid Profile

Analyte	LOQ (wt/wt) %	(wt/wt) %	mg/g
CBC	0.019	ND	N/A
CBCA	0.045	ND	N/A
THCV	0.036	ND	N/A
THCVA	0.032	ND	N/A
CBDV	0.024	0.027	9.371
CBDVA	0.027	ND	N/A
CBL	0.020	ND	N/A
CBLA	0.012	ND	N/A
HHC (9S+9R)	0.015	ND	N/A

Total Potential THC = (THCA * 0.877) + Δ9-THC
 Total Potential CBD = (CBDA * 0.877) + CBD
 (wt/wt) % = Percent (Weight of Analyte / Weight of Product)
 *Total Cannabinoids result reflects the absolute sum of all cannabinoids detected.

Cannabinoids analyzed per Atlas Labs FL ATP-5100 on Waters Aquity UPLC.

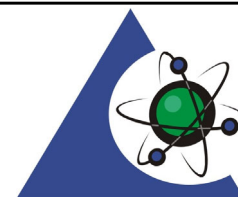
Terms & Definitions:

ND = Not Detected
 LOD = Limit of Detection
 LOQ = Limit of Quantitation

I certify that this sample has been tested by Atlas Labs FL, LLC. All results are reported on AS-IS basis.

Andrea Salcedo

Andrea Salcedo
 Laboratory Manager



PJLA
Testing

Certificate No.: L20-771

This product has been tested by Atlas Labs FL, LLC using validated testing methodologies under a QMS as required by ISO 17025:2017 and Florida state law. Sample collected per Atlas Labs' SOP-3006. This certificate may not be reproduced except in full, without the written approval of Atlas Labs FL, LLC. Additional information, if applicable, may be included on separate reports. The results relate only to the material or product analyzed. Test results are confidential unless explicitly waived otherwise. Action levels are State determined thresholds for human safety for consumption and/or inhalation. The results >99% are variable based on uncertainty of measurement for the analyte. The measurement uncertainty is available from the lab upon request.



Item: Kore Oil Tincture
 Certificate ID#: H008-133-08
 Collected: 29 JUN 2022
 Strain: Peppermint – 450 mg
 Batch/Lot ID Code: GVB 001

Received: 29 JUN 2022

Client Name: Summitt Labs
 Address: 6375 Harney Rd., Ste. 106, Tampa, FL 33610

License #:
 Report Date: 08 JUL 2022



ND Total Potential THC	1.707% Total Potential CBD
----------------------------------	--------------------------------------

1.721% Total Cannabinoids

Cannabinoid Profile

Analyte	LOQ (wt/wt) %	(wt/wt) %	mg/g
Δ9-THC	0.019	ND	N/A
Δ8-THC	0.061	ND	N/A
Δ10-THC	0.001	ND	N/A
THCA-A	0.036	ND	N/A
CBD	0.001	1.707	497.834
CBDA	0.004	ND	N/A
CBN	0.023	ND	N/A
CBG	0.024	ND	N/A
CBGA	0.002	ND	N/A

Cannabinoid Profile

Analyte	LOQ (wt/wt) %	(wt/wt) %	mg/g
CBC	0.019	ND	N/A
CBCA	0.045	ND	N/A
THCV	0.036	ND	N/A
THCVA	0.032	ND	N/A
CBDV	0.024	0.014	4.126
CBDVA	0.027	ND	N/A
CBL	0.020	ND	N/A
CBLA	0.012	ND	N/A
HHC (9S+9R)	0.015	ND	N/A

Total Potential THC = (THCA * 0.877) + Δ9-THC
 Total Potential CBD = (CBDA * 0.877) + CBD
 (wt/wt) % = Percent (Weight of Analyte / Weight of Product)
 *Total Cannabinoids result reflects the absolute sum of all cannabinoids detected.

Cannabinoids analyzed per Atlas Labs FL ATP-5100 on Waters Aquity UPLC.

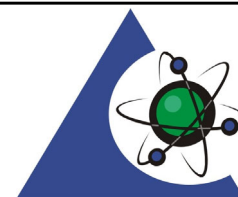
Terms & Definitions:

ND = Not Detected
 LOD = Limit of Detection
 LOQ = Limit of Quantitation

I certify that this sample has been tested by Atlas Labs FL, LLC. All results are reported on AS-IS basis.

Andrea Salcedo

Andrea Salcedo
 Laboratory Manager



PJLA
Testing

Certificate No.: L20-771

This product has been tested by Atlas Labs FL, LLC using validated testing methodologies under a QMS as required by ISO 17025:2017 and Florida state law. Sample collected per Atlas Labs' SOP-3006. This certificate may not be reproduced except in full, without the written approval of Atlas Labs FL, LLC. Additional information, if applicable, may be included on separate reports. The results relate only to the material or product analyzed. Test results are confidential unless explicitly waived otherwise. Action levels are State determined thresholds for human safety for consumption and/or inhalation. The results >99% are variable based on uncertainty of measurement for the analyte. The measurement uncertainty is available from the lab upon request.



Item: Kore Oil Tincture
 Certificate ID#: H008-133-09
 Collected: 29 JUN 2022
 Strain: Peppermint – 750 mg
 Batch/Lot ID Code: GVB 001

Received: 29 JUN 2022

Client Name: Summitt Labs
 Address: 6375 Harney Rd., Ste. 106, Tampa, FL 33610

License #:
 Report Date: 08 JUL 2022



ND Total Potential THC	2.609% Total Potential CBD
----------------------------------	--------------------------------------

2.630% Total Cannabinoids

Cannabinoid Profile

Analyte	LOQ (wt/wt) %	(wt/wt) %	mg/g
Δ9-THC	0.019	ND	N/A
Δ8-THC	0.061	ND	N/A
Δ10-THC	0.001	ND	N/A
THCA-A	0.036	ND	N/A
CBD	0.001	2.609	793.903
CBDA	0.004	ND	N/A
CBN	0.023	ND	N/A
CBG	0.024	ND	N/A
CBGA	0.002	ND	N/A

Cannabinoid Profile

Analyte	LOQ (wt/wt) %	(wt/wt) %	mg/g
CBC	0.019	ND	N/A
CBCA	0.045	ND	N/A
THCV	0.036	ND	N/A
THCVA	0.032	ND	N/A
CBDV	0.024	0.021	6.373
CBDVA	0.027	ND	N/A
CBL	0.020	ND	N/A
CBLA	0.012	ND	N/A
HHC (9S+9R)	0.015	ND	N/A

Total Potential THC = (THCA * 0.877) + Δ9-THC

Total Potential CBD = (CBDA * 0.877) + CBD

(wt/wt) % = Percent (Weight of Analyte / Weight of Product)

*Total Cannabinoids result reflects the absolute sum of all cannabinoids detected.

Cannabinoids analyzed per Atlas Labs FL ATP-5100 on Waters Aquity UPLC.

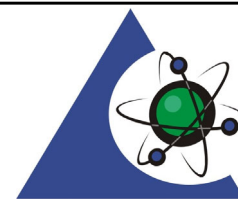
Terms & Definitions:

ND = Not Detected
 LOD = Limit of Detection
 LOQ = Limit of Quantitation

I certify that this sample has been tested by Atlas Labs FL, LLC. All results are reported on AS-IS basis.

Andrea Salcedo

Andrea Salcedo
 Laboratory Manager



PJLA
Testing

Certificate No.: L20-771

This product has been tested by Atlas Labs FL, LLC using validated testing methodologies under a QMS as required by ISO 17025:2017 and Florida state law. Sample collected per Atlas Labs' SOP-3006. This certificate may not be reproduced except in full, without the written approval of Atlas Labs FL, LLC. Additional information, if applicable, may be included on separate reports. The results relate only to the material or product analyzed. Test results are confidential unless explicitly waived otherwise. Action levels are State determined thresholds for human safety for consumption and/or inhalation. The results >99% are variable based on uncertainty of measurement for the analyte. The measurement uncertainty is available from the lab upon request.

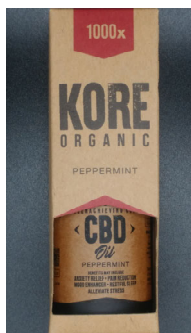


Item: Kore Oil Tincture
 Certificate ID#: H008-133-10
 Collected: 29 JUN 2022
 Strain: Peppermint – 1000 mg
 Batch/Lot ID Code: GVB 001

Received: 29 JUN 2022

Client Name: Summitt Labs
 Address: 6375 Harney Rd., Ste. 106, Tampa, FL 33610

License #:
 Report Date: 08 JUL 2022



ND Total Potential THC	4.034% Total Potential CBD
----------------------------------	--------------------------------------

4.062% Total Cannabinoids

Cannabinoid Profile

Analyte	LOQ (wt/wt) %	(wt/wt) %	mg/g
Δ9-THC	0.019	ND	N/A
Δ8-THC	0.061	ND	N/A
Δ10-THC	0.001	ND	N/A
THCA-A	0.036	ND	N/A
CBD	0.001	4.034	1128.529
CBDA	0.004	ND	N/A
CBN	0.023	ND	N/A
CBG	0.024	ND	N/A
CBGA	0.002	ND	N/A

Cannabinoid Profile

Analyte	LOQ (wt/wt) %	(wt/wt) %	mg/g
CBC	0.019	ND	N/A
CBCA	0.045	ND	N/A
THCV	0.036	ND	N/A
THCVA	0.032	ND	N/A
CBDV	0.024	0.028	7.793
CBDVA	0.027	ND	N/A
CBL	0.020	ND	N/A
CBLA	0.012	ND	N/A
HHC (9S+9R)	0.015	ND	N/A

Total Potential THC = (THCA * 0.877) + Δ9-THC
 Total Potential CBD = (CBDA * 0.877) + CBD
 (wt/wt) % = Percent (Weight of Analyte / Weight of Product)
 *Total Cannabinoids result reflects the absolute sum of all cannabinoids detected.

Cannabinoids analyzed per Atlas Labs FL ATP-5100 on Waters Aquity UPLC.

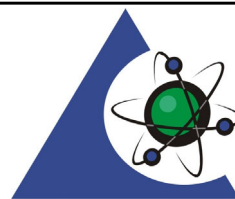
Terms & Definitions:

ND = Not Detected
 LOD = Limit of Detection
 LOQ = Limit of Quantitation

I certify that this sample has been tested by Atlas Labs FL, LLC. All results are reported on AS-IS basis.

Andrea Salcedo

Andrea Salcedo
 Laboratory Manager



PJLA
Testing

Certificate No.: L20-771

This product has been tested by Atlas Labs FL, LLC using validated testing methodologies under a QMS as required by ISO 17025:2017 and Florida state law. Sample collected per Atlas Labs' SOP-3006. This certificate may not be reproduced except in full, without the written approval of Atlas Labs FL, LLC. Additional information, if applicable, may be included on separate reports. The results relate only to the material or product analyzed. Test results are confidential unless explicitly waived otherwise. Action levels are State determined thresholds for human safety for consumption and/or inhalation. The results >99% are variable based on uncertainty of measurement for the analyte. The measurement uncertainty is available from the lab upon request.



Item: Kore Oil Tincture
 Certificate ID#: H008-133-05
 Collected: 29 JUN 2022
 Strain: Watermelon – 450mg
 Batch/Lot ID Code: GVB 001

Received: 29 JUN 2022

Client Name: Summitt Labs
 Address: 6375 Harney Rd., Ste. 106, Tampa, FL 33610

License #:
 Report Date: 08 JUL 2022



ND Total Potential THC	1.456% Total Potential CBD
----------------------------------	--------------------------------------

1.471% Total Cannabinoids

Cannabinoid Profile

Analyte	LOQ (wt/wt) %	(wt/wt) %	mg/g
Δ9-THC	0.019	ND	N/A
Δ8-THC	0.061	ND	N/A
Δ10-THC	0.001	ND	N/A
THCA-A	0.036	ND	N/A
CBD	0.001	1.456	499.014
CBDA	0.004	ND	N/A
CBN	0.023	ND	N/A
CBG	0.024	ND	N/A
CBGA	0.002	ND	N/A

Cannabinoid Profile

Analyte	LOQ (wt/wt) %	(wt/wt) %	mg/g
CBC	0.019	ND	N/A
CBCA	0.045	ND	N/A
THCV	0.036	ND	N/A
THCVA	0.032	ND	N/A
CBDV	0.024	0.015	4.190
CBDVA	0.027	ND	N/A
CBL	0.020	ND	N/A
CBLA	0.012	ND	N/A
HHC (9S+9R)	0.015	ND	N/A

Total Potential THC = (THCA * 0.877) + Δ9-THC
 Total Potential CBD = (CBDA * 0.877) + CBD
 (wt/wt) % = Percent (Weight of Analyte / Weight of Product)
 *Total Cannabinoids result reflects the absolute sum of all cannabinoids detected.

Cannabinoids analyzed per Atlas Labs FL ATP-5100 on Waters Aquity UPLC.

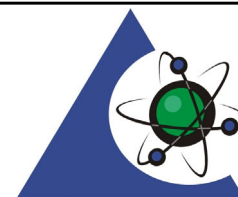
Terms & Definitions:

ND = Not Detected
 LOD = Limit of Detection
 LOQ = Limit of Quantitation

I certify that this sample has been tested by Atlas Labs FL, LLC. All results are reported on AS-IS basis.

Andrea Salcedo

Andrea Salcedo
 Laboratory Manager



PJLA
Testing

Certificate No.: L20-771

This product has been tested by Atlas Labs FL, LLC using validated testing methodologies under a QMS as required by ISO 17025:2017 and Florida state law. Sample collected per Atlas Labs' SOP-3006. This certificate may not be reproduced except in full, without the written approval of Atlas Labs FL, LLC. Additional information, if applicable, may be included on separate reports. The results relate only to the material or product analyzed. Test results are confidential unless explicitly waived otherwise. Action levels are State determined thresholds for human safety for consumption and/or inhalation. The results >99% are variable based on uncertainty of measurement for the analyte. The measurement uncertainty is available from the lab upon request.



Item: Kore Oil Tincture
 Certificate ID#: H008-133-06
 Collected: 29 JUN 2022
 Strain: Watermelon – 750 mg
 Batch/Lot ID Code: GVB 001

Received: 29 JUN 2022

Client Name: Summitt Labs
 Address: 6375 Harney Rd., Ste. 106, Tampa, FL 33610

License #:
 Report Date: 08 JUL 2022



ND Total Potential THC	2.748% Total Potential CBD
----------------------------------	--------------------------------------

2.768% Total Cannabinoids

Cannabinoid Profile

Analyte	LOQ (wt/wt) %	(wt/wt) %	mg/g
Δ9-THC	0.019	ND	N/A
Δ8-THC	0.061	ND	N/A
Δ10-THC	0.001	ND	N/A
THCA-A	0.036	ND	N/A
CBD	0.001	2.748	777.082
CBDA	0.004	ND	N/A
CBN	0.023	ND	N/A
CBG	0.024	ND	N/A
CBGA	0.002	ND	N/A

Cannabinoid Profile

Analyte	LOQ (wt/wt) %	(wt/wt) %	mg/g
CBC	0.019	ND	N/A
CBCA	0.045	ND	N/A
THCV	0.036	ND	N/A
THCVA	0.032	ND	N/A
CBDV	0.024	0.020	5.794
CBDVA	0.027	ND	N/A
CBL	0.020	ND	N/A
CBLA	0.012	ND	N/A
HHC (9S+9R)	0.015	ND	N/A

Total Potential THC = (THCA * 0.877) + Δ9-THC
 Total Potential CBD = (CBDA * 0.877) + CBD
 (wt/wt) % = Percent (Weight of Analyte / Weight of Product)
 *Total Cannabinoids result reflects the absolute sum of all cannabinoids detected.

Cannabinoids analyzed per Atlas Labs FL ATP-5100 on Waters Aquity UPLC.

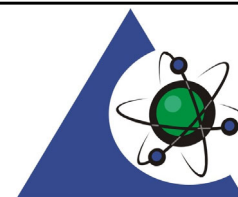
Terms & Definitions:

ND = Not Detected
 LOD = Limit of Detection
 LOQ = Limit of Quantitation

I certify that this sample has been tested by Atlas Labs FL, LLC. All results are reported on AS-IS basis.

Andrea Salcedo

Andrea Salcedo
 Laboratory Manager



PJLA
Testing

Certificate No.: L20-771

This product has been tested by Atlas Labs FL, LLC using validated testing methodologies under a QMS as required by ISO 17025:2017 and Florida state law. Sample collected per Atlas Labs' SOP-3006. This certificate may not be reproduced except in full, without the written approval of Atlas Labs FL, LLC. Additional information, if applicable, may be included on separate reports. The results relate only to the material or product analyzed. Test results are confidential unless explicitly waived otherwise. Action levels are State determined thresholds for human safety for consumption and/or inhalation. The results >99% are variable based on uncertainty of measurement for the analyte. The measurement uncertainty is available from the lab upon request.



Item: Kore Oil Tincture
 Certificate ID#: H008-133-07
 Collected: 29 JUN 2022
 Strain: Watermelon – 1000 mg
 Batch/Lot ID Code: GVB 001

Received: 29 JUN 2022

Client Name: Summitt Labs
 Address: 6375 Harney Rd., Ste. 106, Tampa, FL 33610

License #:
 Report Date: 08 JUL 2022



ND Total Potential THC	3.902% Total Potential CBD
----------------------------------	--------------------------------------

3.930% Total Cannabinoids

Cannabinoid Profile

Analyte	LOQ (wt/wt) %	(wt/wt) %	mg/g
Δ9-THC	0.019	ND	N/A
Δ8-THC	0.061	ND	N/A
Δ10-THC	0.001	ND	N/A
THCA-A	0.036	ND	N/A
CBD	0.001	3.902	1094.053
CBDA	0.004	ND	N/A
CBN	0.023	ND	N/A
CBG	0.024	ND	N/A
CBGA	0.002	ND	N/A

Cannabinoid Profile

Analyte	LOQ (wt/wt) %	(wt/wt) %	mg/g
CBC	0.019	ND	N/A
CBCA	0.045	ND	N/A
THCV	0.036	ND	N/A
THCVA	0.032	ND	N/A
CBDV	0.024	0.028	7.786
CBDVA	0.027	ND	N/A
CBL	0.020	ND	N/A
CBLA	0.012	ND	N/A
HHC (9S+9R)	0.015	ND	N/A

Total Potential THC = (THCA * 0.877) + Δ9-THC

Total Potential CBD = (CBDA * 0.877) + CBD

(wt/wt) % = Percent (Weight of Analyte / Weight of Product)

*Total Cannabinoids result reflects the absolute sum of all cannabinoids detected.

Cannabinoids analyzed per Atlas Labs FL ATP-5100 on Waters Aquity UPLC.

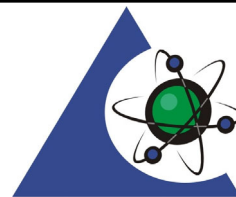
Terms & Definitions:

ND = Not Detected
 LOD = Limit of Detection
 LOQ = Limit of Quantitation

I certify that this sample has been tested by Atlas Labs FL, LLC. All results are reported on AS-IS basis.

Andrea Salcedo

Andrea Salcedo
 Laboratory Manager



PJLA
Testing

Certificate No.: L20-771

This product has been tested by Atlas Labs FL, LLC using validated testing methodologies under a QMS as required by ISO 17025:2017 and Florida state law. Sample collected per Atlas Labs' SOP-3006. This certificate may not be reproduced except in full, without the written approval of Atlas Labs FL, LLC. Additional information, if applicable, may be included on separate reports. The results relate only to the material or product analyzed. Test results are confidential unless explicitly waived otherwise. Action levels are State determined thresholds for human safety for consumption and/or inhalation. The results >99% are variable based on uncertainty of measurement for the analyte. The measurement uncertainty is available from the lab upon request.